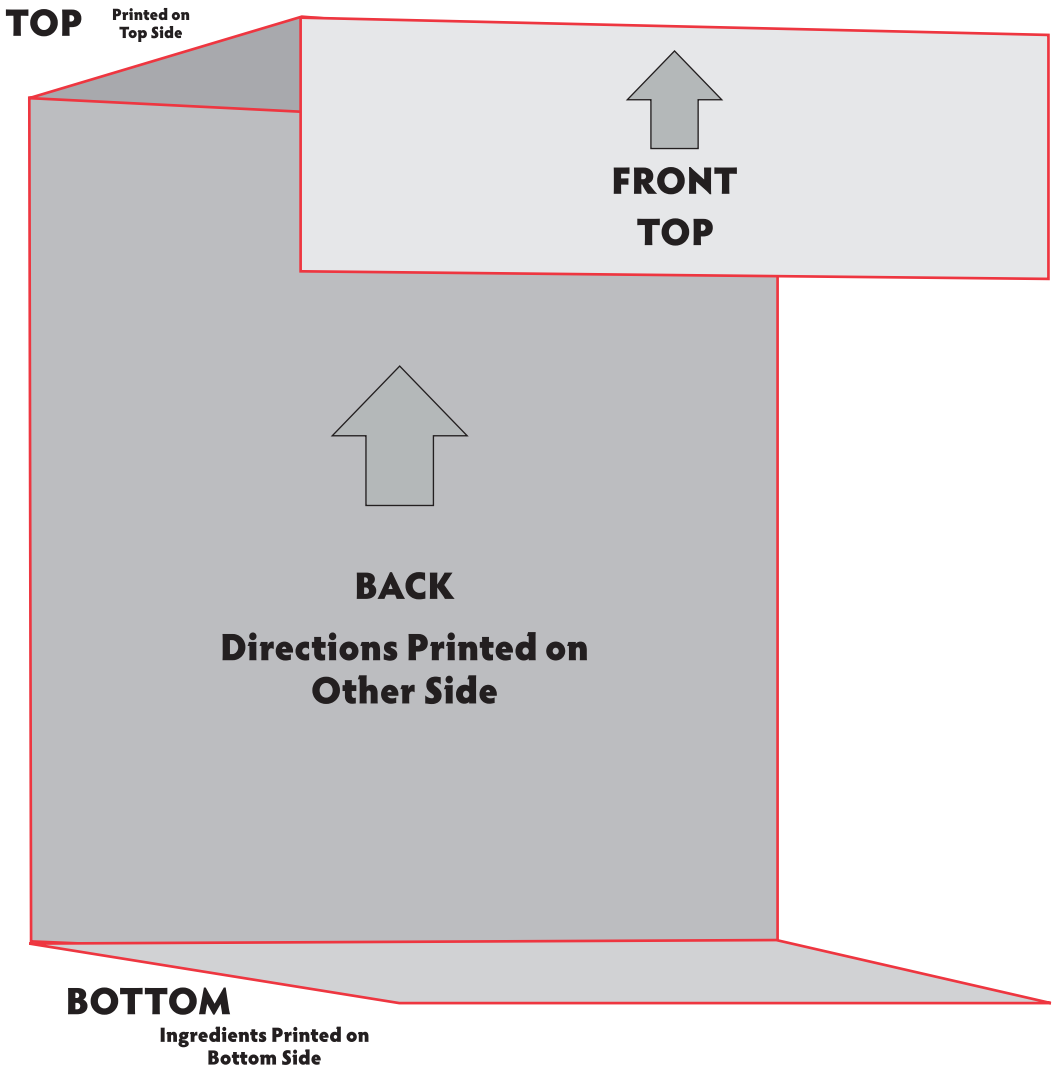
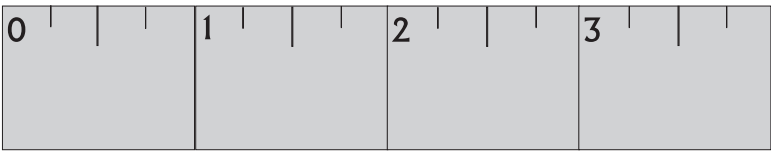


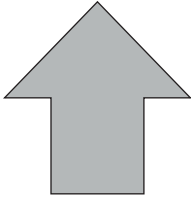
HCKL

HOT CHOCOLATE ON A SPOON GIFT SET

INSERT



PRODUCT DIMENSIONS:
6.00" L X 1.50" W X 5.0H"



- Denotes orientation of art on panel.
Arrow points to top of panel



- Red Layout Lines Do NOT Print.

asi/71685 • ppai 113793 • sage 56349

FRONT TOP

TOP

BACK

BOTTOM

5.05"W x2.05"H

5.05"W x 1.45"H

5.05"w x 5.95"H

HOT *Chocolate* ^{on} a SPOON

instructions

1

Fill cup with 6 oz of milk or water and heat in microwave for approximately 90 seconds

2

Place Hot Chocolate on a Spoon in hot liquid

3

Stir until chocolate has completely dissolved

enjoy!

Ingredients: *Milk Chocolate:* Sugar, cocoa butter, Belgian unsweetened chocolate, whole milk powder, nonfat dry milk, milkfat, soy lecithin (an emulsifier), natural vanilla extract, *Dark Chocolate:* Belgian unsweetened chocolate, sugar, cocoa butter, soy lecithin (an emulsifier), natural vanilla extract, *White Chocolate:* Sugar, cocoa butter, whole milk powder, soy lecithin (an emulsifier), natural vanilla extract, *Salted Caramel:* Chocolate (sugar, cocoa butter, Belgian unsweetened chocolate, whole milk powder, nonfat drymilk, milkfat, soy lecithin (an emulsifier), natural vanilla extract); Caramel Pieces (sugar, corn syrup, liquid sugar, skim milk, palm oil, butter, salt, mono and diglycerides, natural flavor, soy lecithin.) Salt, *Milk Chocolate Marshmallow:* Chocolate (sugar, cocoa butter, Belgian unsweetened chocolate, whole milk powder, nonfat dry milk, milkfat, soy lecithin (an emulsifier), natural vanilla extract); Marshmallows (Sugar, corn syrup, modified cornstarch, gelatin, sodium hexametaphosphate, artificial flavor, natural flavor, artificial color(blue #1)), *Mexican Hot Chocolate:* Chocolate (sugar, cocoa butter, Belgian unsweetened chocolate, whole milk powder, nonfat dry milk, milkfat, soy lecithin (an emulsifier), natural vanilla extract); cinnamon, cayenne pepper.