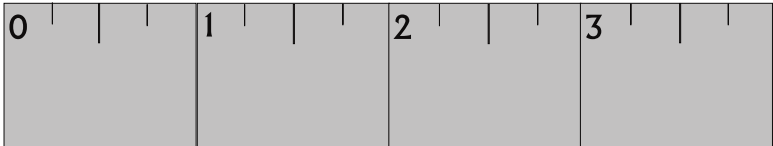




TCMS-TRC2-SMK

EXECUTIVE SMORES KIT

INSERT



FRONT TOP

3.45"W
X
1.50"H

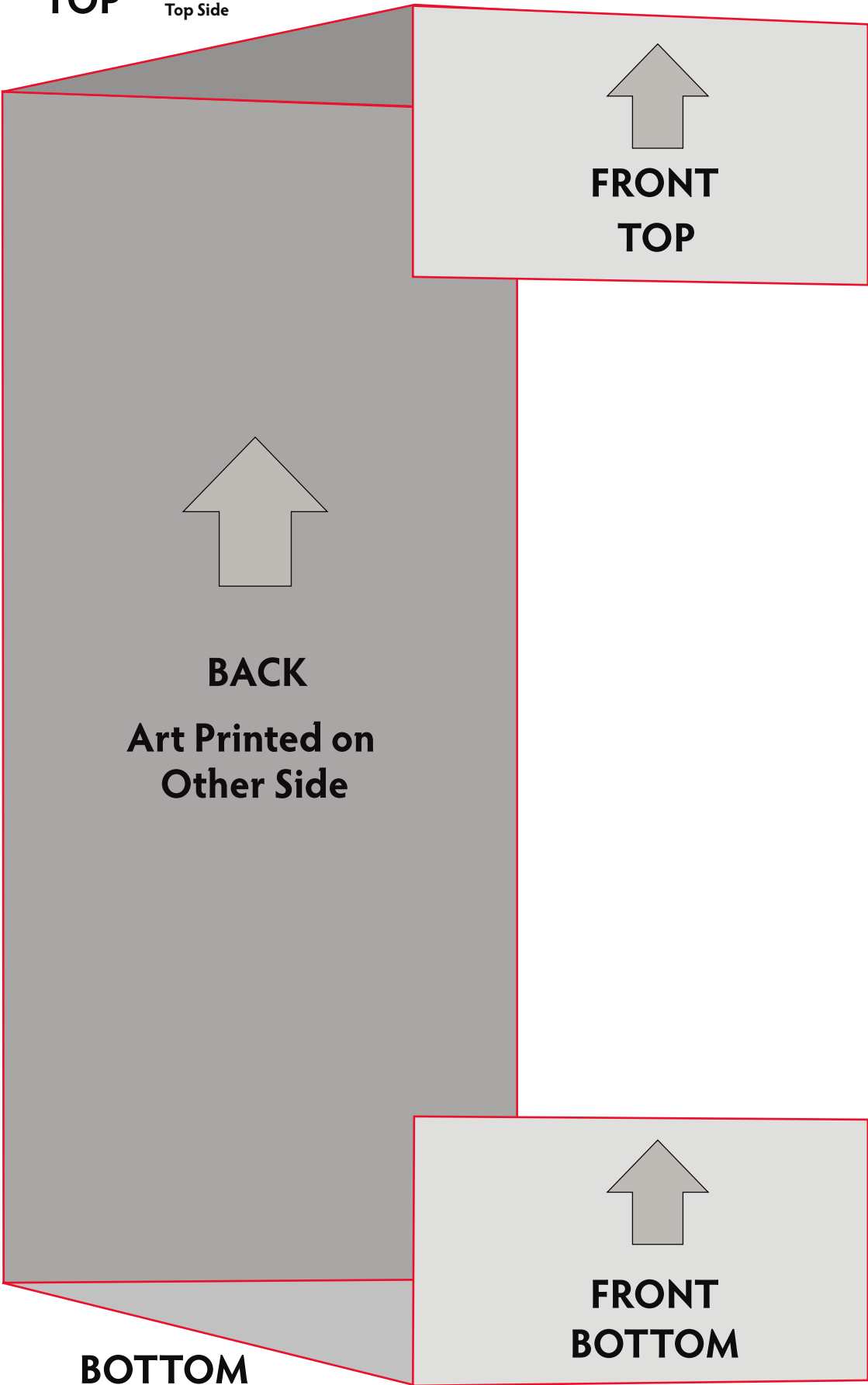
Score Line

TOP

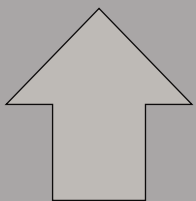
3.45"W
X
3.45"H

TOP

Printed on
Top Side



FRONT
TOP



BACK
Art Printed on
Other Side

BACK

3.45"W
X
8.40"H

FRONT
BOTTOM

BOTTOM

Printed on
Bottom Side

PRODUCT DIMENSIONS:
8.625"H X 3.75" W X 3.75D"

BOTTOM

3.45"W
X
3.45"H

FRONT BOTTOM

3.45"W
X
1.50"H

Score Line

KIT CONTENTS

9 - GRAHAM CRACKERS
9 - MARSHMALLOWS
9 - TINY TONY'S CHOCOLONELY® MILK CHOCOLATE CHUNKS

MICROWAVE DIRECTIONS

1. CENTER CHOCOLATE ON GRAHAM CRACKER.

2. TOP WITH A MARSHMALLOW, PLACE ON PAPER TOWEL AND MICROWAVE AT MEDIUM (50%) IN 10 SECOND INTERVALS UNTIL MARSHMALLOWS PUFF.

3. PLACE OTHER GRAHAM CRACKER ON TOP. GIVE IT A LITTLE SQUEEZE AND TAKE A BITE!


INGREDIENTS

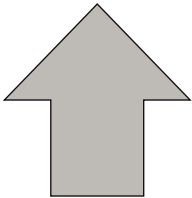
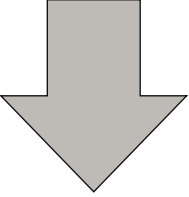
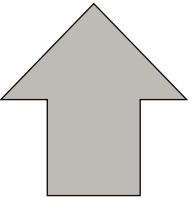
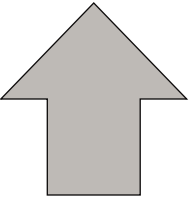
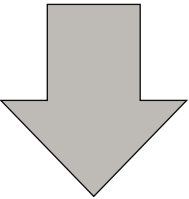
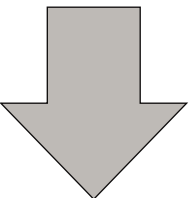
TINY TONY'S CHOCOLONELY® MILK CHOCOLATE (SUGAR, DRY WHOLE MILK, COCOA BUTTER, CHOCOLATE LIQUOR, SOY LECITHIN). **CONTAINS: MILK, SOY.**

GRAHAM CRACKERS: UNBLEACHED ENRICHED FLOUR (WHEAT FLOUR, NIACIN, REDUCED IRON, THIAMINE MONONITRATE (VITAMIN B1), RIBOFLAVIN (VITAMIN B2), FOLIC ACID), GRAHAM FLOUR (WHOLE GRAIN WHEAT FLOUR), SUGAR, CANOLA OIL, HONEY, LEAVENING (BAKING SODA AND/OR CALCIUM PHOSPHATE), SALT, SOY LECITHIN, ARTIFICIAL FLAVOR. **CONTAINS: WHEAT, SOY.**

MARSHMALLOWS: CORN SYRUP, SUGAR, MODIFIED FOOD STARCH (CORN), GELATIN, WATER, DEXTROSE, NATURAL AND ARTIFICIAL FLAVOR, TETRASODIUM PYROPHOSPHATE.

PACKAGED IN A FACILITY THAT ALSO USES MILK, EGGS, SOY, WHEAT, PEANUTS, TREE NUTS, SESAME.

 Adult supervision recommended for children 12 and under.



- Denotes orientation of art on panel.
Arrow points to top of panel



- Red Layout Lines Do NOT Print.