



TRC2-SMK

EXECUTIVE SMORES KIT

INSERT



FRONT TOP

3.45" W
X
1.50" H

Score Line

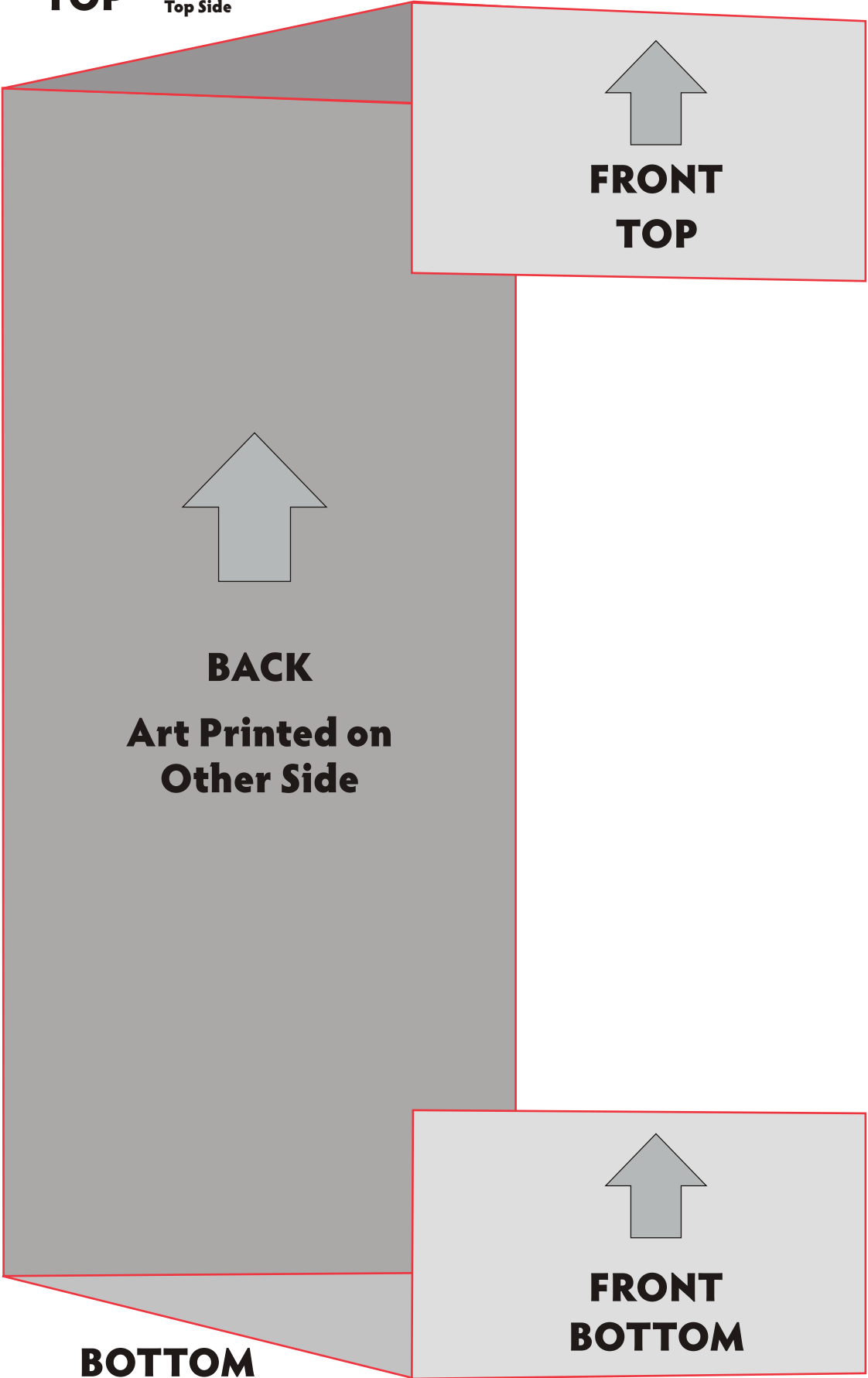
TOP

3.45" W
X
3.45" H

Score Line

TOP

Printed on
Top Side



BACK

3.45" W
X
8.40" H

Score Line

BOTTOM

3.45" W
X
3.45" H

Score Line

FRONT BOTTOM

3.45" W
X
1.50" H

KIT CONTENTS

3 - 1.55 oz HERSHEY® Milk Chocolate Bars
9 - Graham Crackers
9 - Marshmallows
4 - 9" Toasting Sticks

MICROWAVE DIRECTIONS

1. Break graham crackers in half.
2. Break chocolate bar in half; center one section on each of two graham cracker halves.
3. Top each with a marshmallow, place on paper towel and microwave at medium (50%) in 10 second intervals until marshmallows puff.

INGREDIENTS

HERSHEY'S® Milk Chocolate Bar: Milk Chocolate (sugar, milk, cocoa butter, chocolate, soy lecithin, vanillin, artificial flavor.)

Graham Crackers: Unbleached enriched wheat flour (flour, niacin, reduced iron, thamine mononitrate - B1, riboflavin - B2, folic acid), sugar, soybean oil, graham flour, honey, cinnamon, salt, soy lecithin (emulsifier), leavening (baking soda), and vanilla.

Marshmallows: Artificial color, artificial flavor, corn syrup dextrose, gelatin, modified corn starch, natural flavor sugar, tetrasodium pyrophosphate, water.

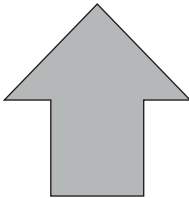
ALLERGEN INFORMATION

This product is packaged in a facility/on equipment where dairy, soy, peanuts, wheat and tree nuts are used.

Trademarks indicate products manufactured by The Hershey Company

PRODUCT DIMENSIONS:

8.625" H X 3.75" W X 3.75D"



- Denotes orientation of art on panel.
Arrow points to top of panel



- Red Layout Lines Do NOT Print.

